

**PRODUCT BRIEF**

1 St. Matthews Close  
Watford, WD19 4ST  
United Kingdom

Website: [www.sinecom.co.uk](http://www.sinecom.co.uk)  
Contact: [enquiries@sinecom.co.uk](mailto:enquiries@sinecom.co.uk)  
Phone: +44 1923 606123

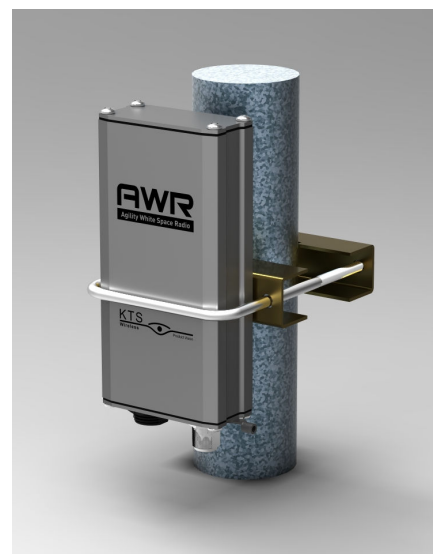
## Agility White Space Radio

**DESCRIPTION:**

The Agility White Space Radio (AWR) supports the UHF band. The UHF AWR is currently approved as a fixed TV band Device (TVBD) under Part 15, Subpart H of the FCC Rules. A wide variety of applications are supported including Video Surveillance, SCADA and broadband wireless Internet access. The radio may be used to create Point-to-Point (PTP), Point-to-Multipoint (PTM) or simplex (one-way) networks with support for any type of IP traffic including voice or video. The AWR is approved to operate with the FCC-approved TV White Space (TVWS) System database service provided by Spectrum Bridge, Inc (SBI). A TVWS database client is provided in the AWR. The TVWS server automatically assigns the operating frequency to all AWRs within a network, based on TV channel availability at device operating locations.

**FEATURES:**

- Agile RF Modules from 145 to 700 MHz
  - UHF – 470 - 698 MHz (14-51)
- Data Rates of 3.1 MB/s
- 6 MHz Channel Size
- Up to 27.5 dBm EIRP
- Automatic Transmit Power Control (ATPC)
- FCC Part 15 Subpart H compliant
- Ethernet Port with bridging
- Indoor or Outdoor mounting Options
- Operates in the "White Space" spectrum\*



Contact SineCom for your specific requirements or custom design services.


**PRODUCT BRIEF**

1 St. Matthews Close  
Watford, WD19 4ST  
United Kingdom

The Ethernet port functions as a bridge for IP subnets via the wireless link. The advanced Media Access controller supports polled access for maximizing both upstream and downstream throughput. Remote management is supported over-the-air with Agility White Space Radio Element Manager.

**SPECIFICATIONS:****Electrical**

RF Module frequency (Model AWR-US-U-100)	470 - 698 MHz (TV Channels 14-51)
RF Transmit Power	10 to 21.5 dBm with ATPC
Noise Figure	4 dB
Spurious & Harmonic Emissions	FCC Part 15 compliant
Data Rates	3.1 MB/s
Modulation	SOQPSK
Channel Bandwidth	6 MHz
Frequency Selection	100 kHz steps
Selectivity	>60 dB
Operating mode	Half-duplex or simplex
User Port	Ethernet (10/100 BT)

**Mechanical**

Dimensions (excluding connectors)	80 x 170 x 38mm (3.15 x 6.7 x 1.5")
Enclosure material	AL, TCP coating
Weight (w/o mount)	0.54 kg (1.2 lb)
Mounting	
Hub	Optional bracket for DIN rail or wall
Remote/Subscriber	1" – 2" pole mount bracket
Connectors	
Antenna	Type N (F)
Ethernet/Power (12 to 24 VDC)	Watertight RJ45

**Environmental**

Operating Temperature Range	-30 to 60° C
Operating Humidity	As encountered in outdoor mounting

**Power**

Input Voltage	12 to 24 VDC, via Ethernet cable (PoE)
Current (12 VDC)	0.4 A (RX), 1.6 A (TX)

*Specifications subject to change without notice.*